



认真 · 开放 · 勇气 · 责任
Earnest Openness Courage Responsibility

Metal Fabrication Solutions-Laser Cutting Machine Provider

金属加工解决方案-激光切割设备提供商

Xuzhou RITMAN Equipment Co.,LTD

+86 13210568291

ritman@sinoritman.com

www.ritmanlasers.com

Chuangye Road 35# Xuzhou Economic Development Zone, Jiangsu, China

徐州瑞马智能技术股份有限公司

0516-83059893

http://www.ritmanlaser.com

江苏徐州经济开发区创业路35号



CORPORATE PHILOSOPHY 企业理念

Efficiency, Innovation Excellence, Win-Win

高效 创新 卓越 共赢

Corporate Vision 企业愿景

Contribute technological strength to social progress

为社会进步贡献技术力量

Corporate Mission 企业使命

Promote industrial upgrading and support intelligent manufacturing

推动产业升级 助力智能制造

CONTENTS

目录

01-02

CONTENTS

公司简介

03-04

CORPORATE HONORS

公司荣誉

05-06

MARKETING NETWORK

营销网络

07-08

R&D STRENGTH

研发实力

09-40

PRODUCTS SERIES

产品介绍

41-42

CORE ASSEMBLE PARTS

核心设备

43-44

APPLICATION FIELDS

应用领域

43-44

SERVICE

服务

45-46

PROJECT CASE &
EXHIBITION

项目案例

45-46

COOPERATIVE PARTNER

合作伙伴

RITMAN
瑞马激光

Xuzhou RITMAN Equipment Co., Ltd. is an intelligent equipment company (Short name "RITMAN Intelligent", English name "RITMAN"). RITMAN with the mission of "intelligent, digital, and trouble-free production", the company is a national high-tech enterprise and National-Level SRDI "Little Giant" Enterprise. Relying on strong R&D and production strength, the company focuses on the sales and service of laser cutting equipment. The main products include: laser plate cutting machine, laser tube cutting machine, large format customized laser cutting machine, laser plate & tube integrated machine, sheet coil laser cutting machine, 3D laser cutting machine, handheld laser welding machine, automated laser welding equipment, robot laser welding machine and other equipment. We are willing to work with our partners for mutual benefit and win-win situation!

徐州瑞马智能技术股份有限公司是一家智能装备企业（简称“瑞马智能”，英文名“RITMAN”）。公司以“工业生产智能化、数字化、无忧化”为使命，是国家级高新技术企业、国家级专精特新“小巨人”企业。公司依托强大的研发生产实力，专注于激光切割设备以及上下游设备的销售与服务，主要产品包括：激光切板机、激光切管机、大幅面定制型激光切割机、激光板管一体机、卷材激光切割机、三维激光切割机、手持激光焊接机、自动化激光焊接设备、机器人激光焊接机等设备。愿与广大合作伙伴互利互惠，共创共赢！

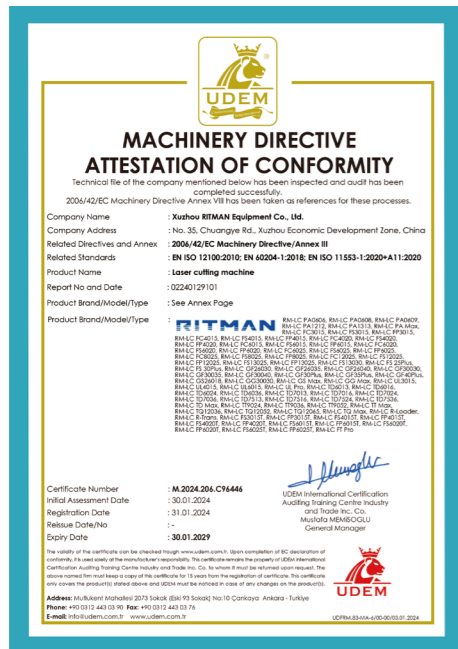
CONTENTS

公司简介

The logo for RITMAN is displayed on the side of a modern industrial building. It consists of the word "RITMAN" in a bold, blue, sans-serif font, with the Chinese characters "瑞马激光" (Ruì mǎ jī guāng) positioned directly below it in a similar blue font. The building itself is primarily white with blue accents and large glass windows.

CORPORATE HONORS

公司荣誉



认真 · 开放 · 勇气 · 责任
 Earnest · Openness · Courage · Responsibility



MARKETING NETWORK

营销网络



100+
global service centers



Hundreds
of corporate honors



3000
cooperative enterprises



400+
employees



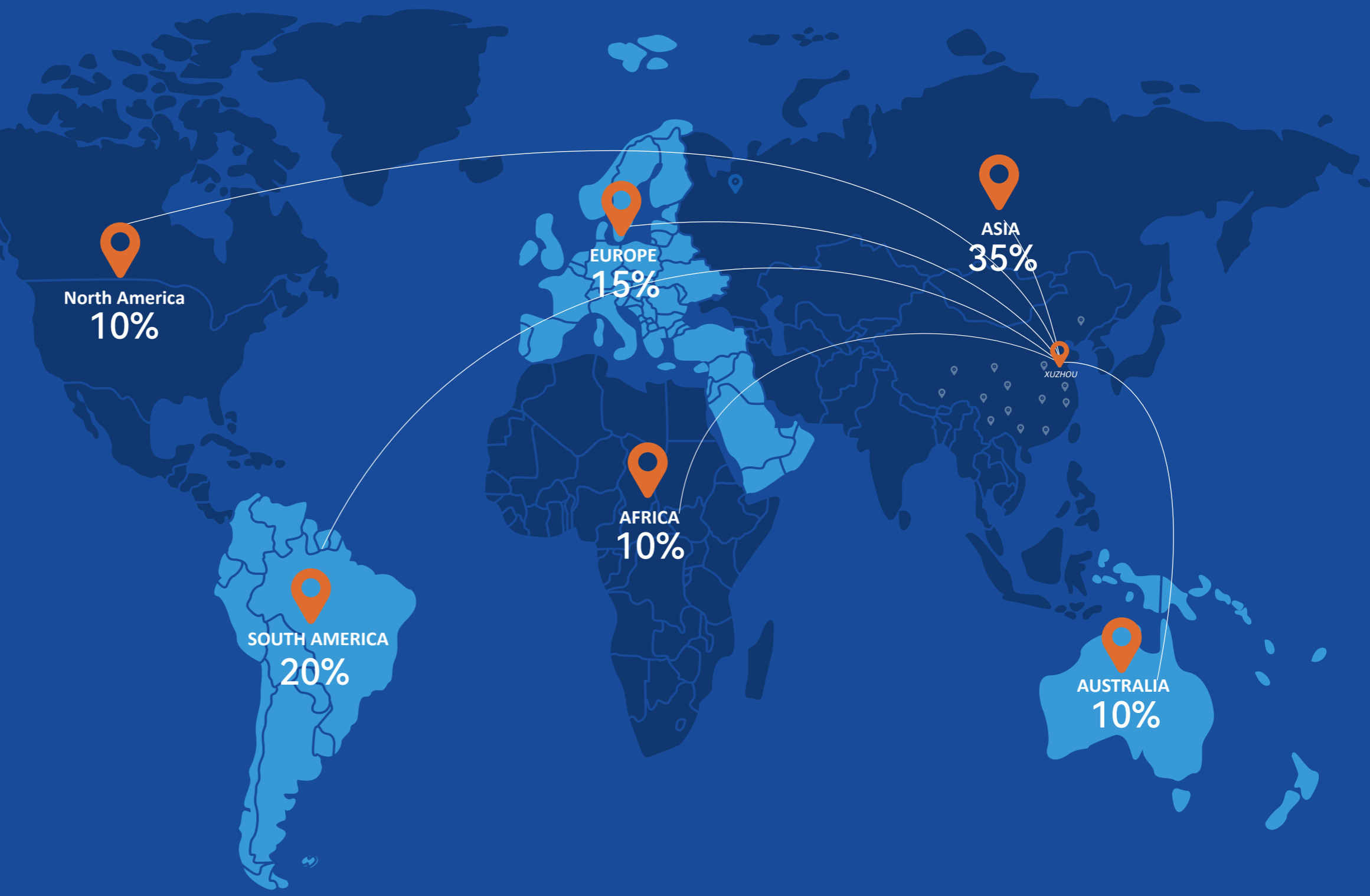
200+
patented technologies

Domestic: Headquarter of RITMAN has been planning to establish 10 agencies and 100 service stations for the center of R&D and manufacturing which enables our web of marketing and service to cover every corner of China, even the world.

国内：瑞马总部为自身研发中心、生产中心，济南国际运营中心，规划建设了10个办事处以及100个服务网点，使自身营销及服务网络覆盖全国，辐射世界各地。

International: The international marketing share by Asia 35%, South America 20%, Europe 15%, America 10%, Australia 10%, Africa 10%.

国际：国际市场的销售的主要区域分别是亚洲35%、南美20%、欧洲15%、北美10%、澳大利亚10%、非洲10%。



R&D STRENGTH

研发实力

Quality Inspection Process 质量控制



Colorimeter
色度计



Film Thickness Gauge
薄膜测厚仪



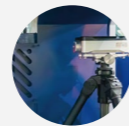
2D Cathetometer
2D 测高计



Hardnesstester
硬度测试



Collimator
准直器



Interferometer
干涉仪

RITMAN Laser has more than 100 R&D engineers, It has a technical R&D team composed of a doctoral team from Dalian University of Technology and a master's team from Southeast University, as well as perfect research laboratory facilities and equipment. RITMAN with strong R&D technical strength, the R&D Technology Center has obtained a total of 64 invention patents, 10 authorizations, 59 utility models, 28 soft publications, and 12 professional papers.

瑞马激光拥有研发技术工程师100余名，同时拥有包括大连理工大学博士生团队和东南大学硕士团队组成的技术研发团队以及完善的科研实验设施设备。自公司成立以来，凭借强劲的研发技术实力加持，研发技术中心累计获得发明专利实审64项、授权10项，实用新型 59项、软著28项、发表专业论文12篇。

100+

Technical Team 技术团队

Ph.D.
博士

Specialist
专家

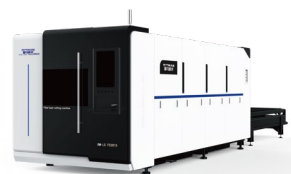
Senior Engineer
高级工程师

200+

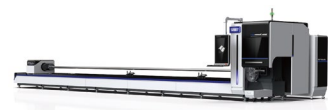
Invention patent
专利

PRODUCT SERIES

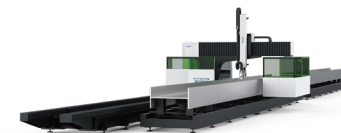
产品系列



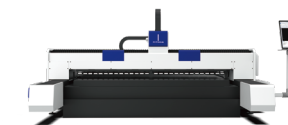
▶▶ Exchange Platform Sheet Laser Cutting Machine
交换平台板材激光切割机



▶▶ 2 Chuck Tube Laser Cutting Machine
两卡盘管材激光切割机



▶▶ H-beam Laser Cutting Machine
H型钢激光切割机



▶▶ Physical Scribing Machine
物理划刻机



▶▶ Single Platform Sheet Laser Cutting Machine
单平台板材激光切割机



▶▶ 3 Chuck Tube Laser Cutting Machine
三卡盘管材激光切割机



▶▶ Integrated Sheet & Tube Laser Cutting Machine
板管一体激光切割机



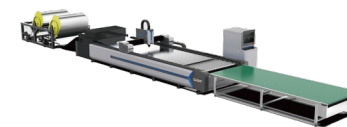
▶▶ Water-cooled laser welding machine
水冷激光焊机



▶▶ Large-format Sheet Laser Cutting Machine
大幅面板材激光切割机



▶▶ 4 Chuck Tube Laser Cutting Machine
四卡盘管材激光切割机



▶▶ Laser Cutting Machine For Coil Materials
卷材激光切割机



▶▶ Air-cooled laser welding machine
风冷激光焊机



▶▶ Board Material Warehouse Feeding System
板材料库上料系统



▶▶ Fully Automatic Feeding System
全自动上料系统



▶▶ Electro-Hydraulic FullEervo CNC Bending Machine
电动液压全伺服数控折弯机



▶▶ Continuous Laser Cleaner
连续激光清洗机

FIBER LASER SHEET CUTTING MACHINE

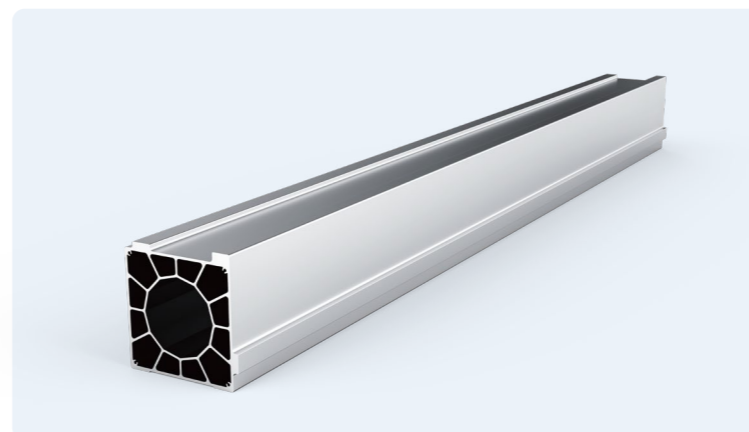
激光板材切割机



High-strength welded bed

高强度焊接床身

High-strength welded bed, secondary aging residual stress treatment, and precision gantry milling machine ultra precision machining have increased rigidity, strength, and stability by more than 30% year-on-year.
高强度焊接床身，加以二次时效残余应力处理及精密龙门铣床超精加工，刚性、强度、稳定性同比提升30%以上。



Aviation Extruded Aluminum Crossbeam

航空铝横梁

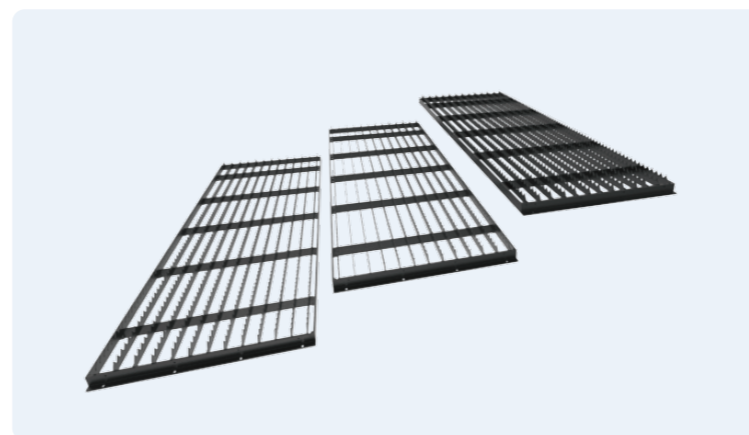
Adopting aviation extruded aluminum crossbeam, it is lightweight and has high-performance dynamic performance, improving efficient motion speed and acceleration.
采用航空挤压铝横梁，重量轻，具有高性能的动态性能，提升了高效的运动速度及加速度。



Precision Module Transmission

精密模组

The integrated Z-axis main body is welded with aluminum alloy plate, matched with precision screw module transmission, with high accuracy and fast speed.
采用铝合金板焊一体式Z轴主体，搭配精密丝杠模组传动，精度高，速度快。



Modular Workbench

模块化工作台

Modular workbench, can be quickly replaced, assembled at will, has high load-bearing capacity, is not affected by the bed, and has high cutting accuracy.
模块化工作台，可快速更换，随意组装，承重高，不受床身影响，切割精度高。

Single Platform Sheet Laser Cutting Machine

单平台板材激光切割机

RM-LC FS Series

3000W-80000W



RM-LC FS

Model 机型	RM-LC FS3015	RM-LC FS6020	RM-LC FS6025	RM-LC FS8025	RM-LC FS12025	RM-LC FS13030	RM-LC FS13030G
Power 功率	3000W-12000W	3000W-80000W	3000W-80000W	3000W-80000W	3000W-80000W	3000W-80000W	3000W-80000W
Processing format 加工幅面	3050mm×1530mm	6100mm×2050mm	6100mm×2550mm	8100mm×2550mm	12500mm×2550	13100mm×3100mm	13100mm×3100 (45°groove×2500) mm
Max. acceleration 最大加速度	1.2G	1.2G	1G	1G	1G	1.2G	1.2G
Maximum no-load synchronized speed 最大空载联动速度	140m/min	130m/min	130m/min	130m/min	130m/min	105m/min	105m/min
Positioning Accuracy 定位精度	±0.05mm/m	±0.05mm/m	+0.05mm/m	±0.05mm/m	±0.05mm/m	±0.05mm/m	±0.05mm/m
Repositioning Accuracy 重复定位精度	±0.03mm	±0.03mm	+0.03mm	±0.03mm	±0.03mm	±0.03mm	±0.03mm

Exchange Platform Sheet Laser Cutting Machine

交换平台板材激光切割机

RM-LC FC Series

3000W-80000W



RM-LC FC

Model 机型	RM-LC FC3015	RM-LC FC6025	RM-LC FC8025	RM-LC FC12025
Power 功率	3000W-12000W	3000W-80000W	3000W-80000W	12000W-80000W
Processing format 加工幅面	3050mm×1530mm	6100mm×2550mm	8100mm*2550mm	12200mm*2550mm
Max. acceleration 最大加速度	1.2G	1G	1G	1G
Max. No-load Speed 最大空载速度	120m/min	130m/min	130m/min	130m/min
Positioning Accuracy 定位精度	±0.05mm/m	±0.05mm/m	±0.05mm/m	±0.05mm/m
Repositioning Accuracy 重复定位精度	±0.03mm	±0.03mm	±0.03mm	±0.03mm

Large-format Sheet Laser Cutting Machine

大幅面地轨板材激光切割机

RM-LC GF Series

6000W-80000W



RM-LC GF				
Model 机型	RM-LC GF26035	RM-LC GF26035G	RM-LC GF26030	RM-LC GF26030G
Power 功率	6000W-80000W	6000W-80000W	6000W-80000W	6000W-80000W
Processing format 加工幅面	26100mm×3550mm	26000mm×3500mm (Straight Cutting Working area) 25380mm×2880mm (45-Degree Bevel Working area)	26100mm×3050mm	26100mm×3050mm (Straight Cutting Working area) 25380mm×2380mm (45-Degree Bevel Working area)
Max. acceleration 最大加速度	0.5G	0.5G	0.5G	0.5G
Max. No-load Speed 最大空载速度	100m/min	100m/min	100m/min	100m/min
Positioning Accuracy 定位精度	±0.08mm/m	±0.08mm/m	±0.08mm/m	±0.08mm/m
Repositioning Accuracy 重复定位精度	±0.05mm	±0.05mm	±0.05mm	±0.05mm

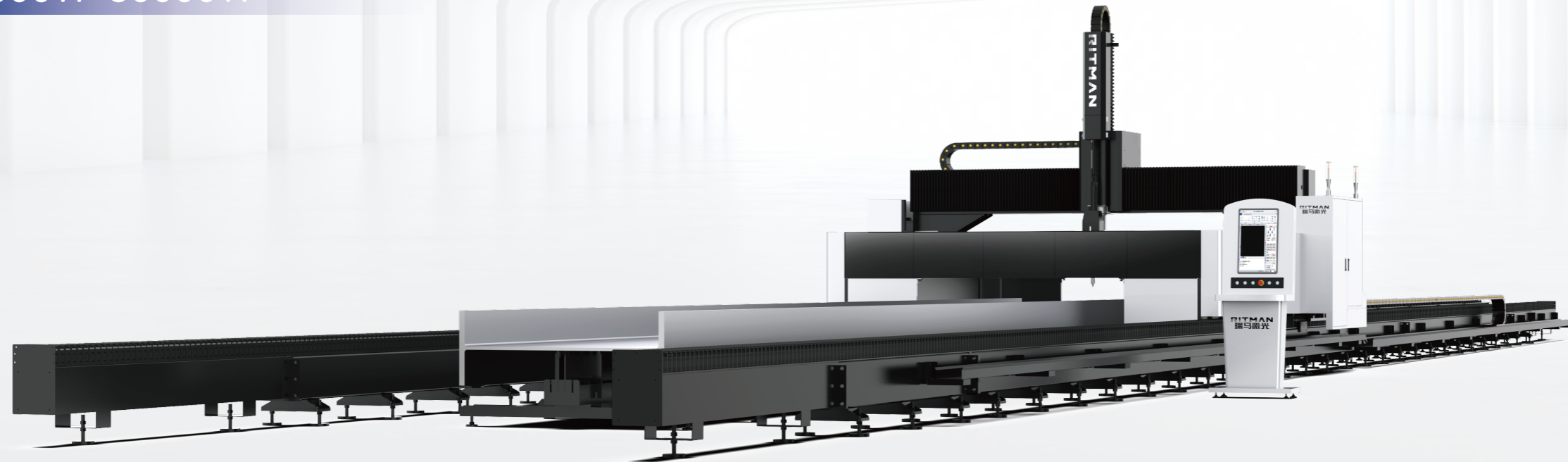
Can customize any size based on standard machines
可依据标准机为基础定制任意尺寸

H-beam Laser Cutting Machine

H型钢激光切割机

RM-LC GG Series

12000W-30000W



RM-LC GG (Gantry)

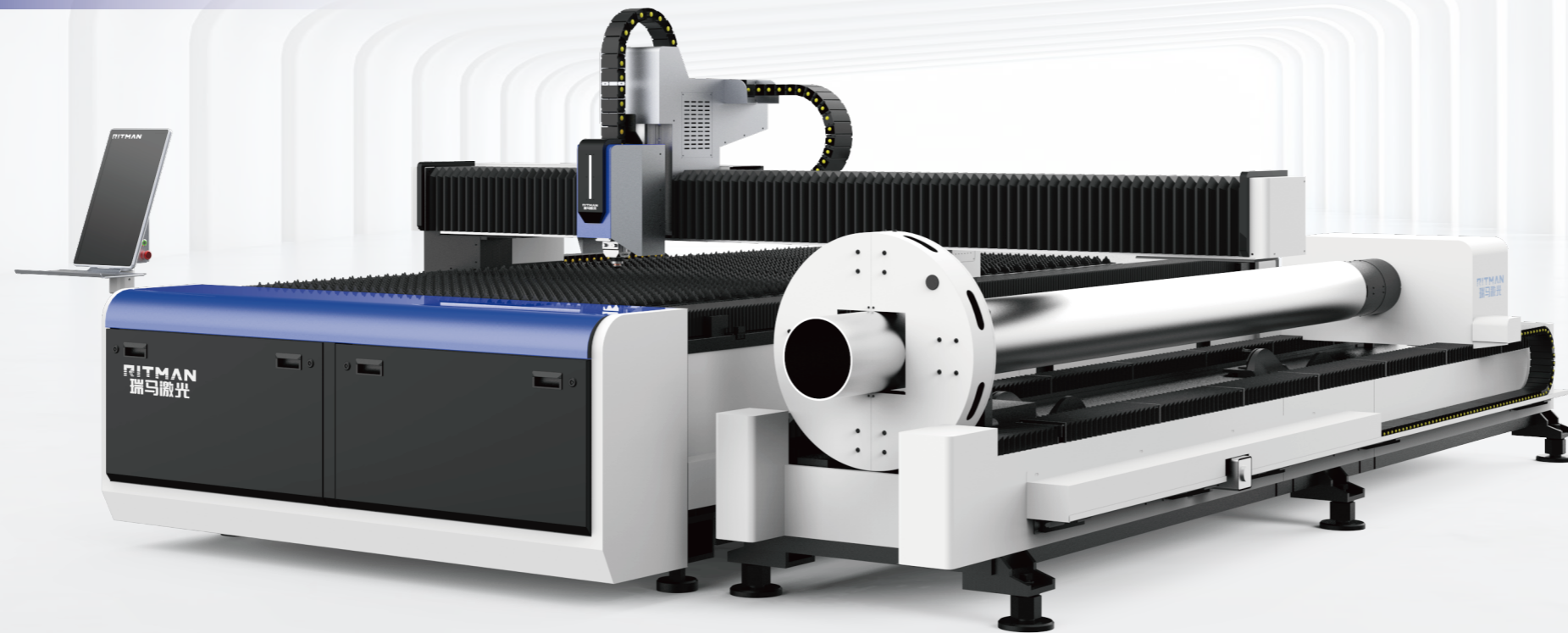
Model 机型	RM-LC GG26030	RM-LC GG26040
Power 功率	12000W-30000W	12000W-30000W
Processing format 加工幅面	26000mm×3000mm	26000mm×4000mm
A. C-axis A.C轴	±90°	±90°
Positioning accuracy 定位精度	±0.08mm/m	±0.08mm/m
Repetitive positioning accuracy 重复定位精度	±0.05mm	±0.05mm
Table load bearing (单个)台面承重	7000kg	7000kg
Maximum movement speed of X/Y axis X/Y轴的最大移动速度	70m/min	70m/min
Max. acceleration 最大加速度	0.5G	0.5G

Integrated Sheet & Tube Laser Cutting Machine

板管一体激光切割机

RM-LC FT Series

3000W-6000W

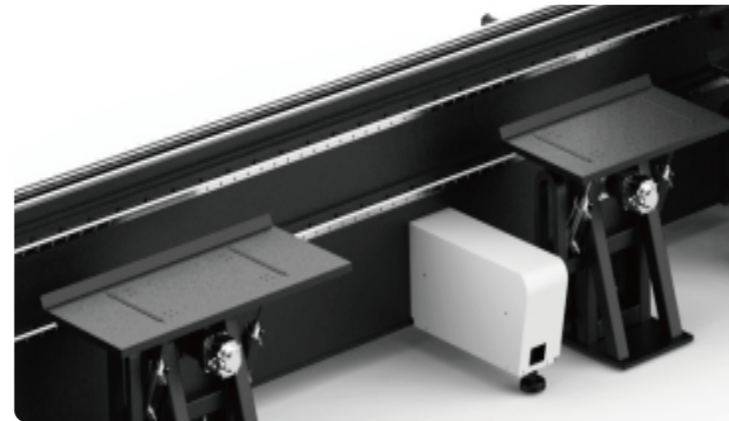
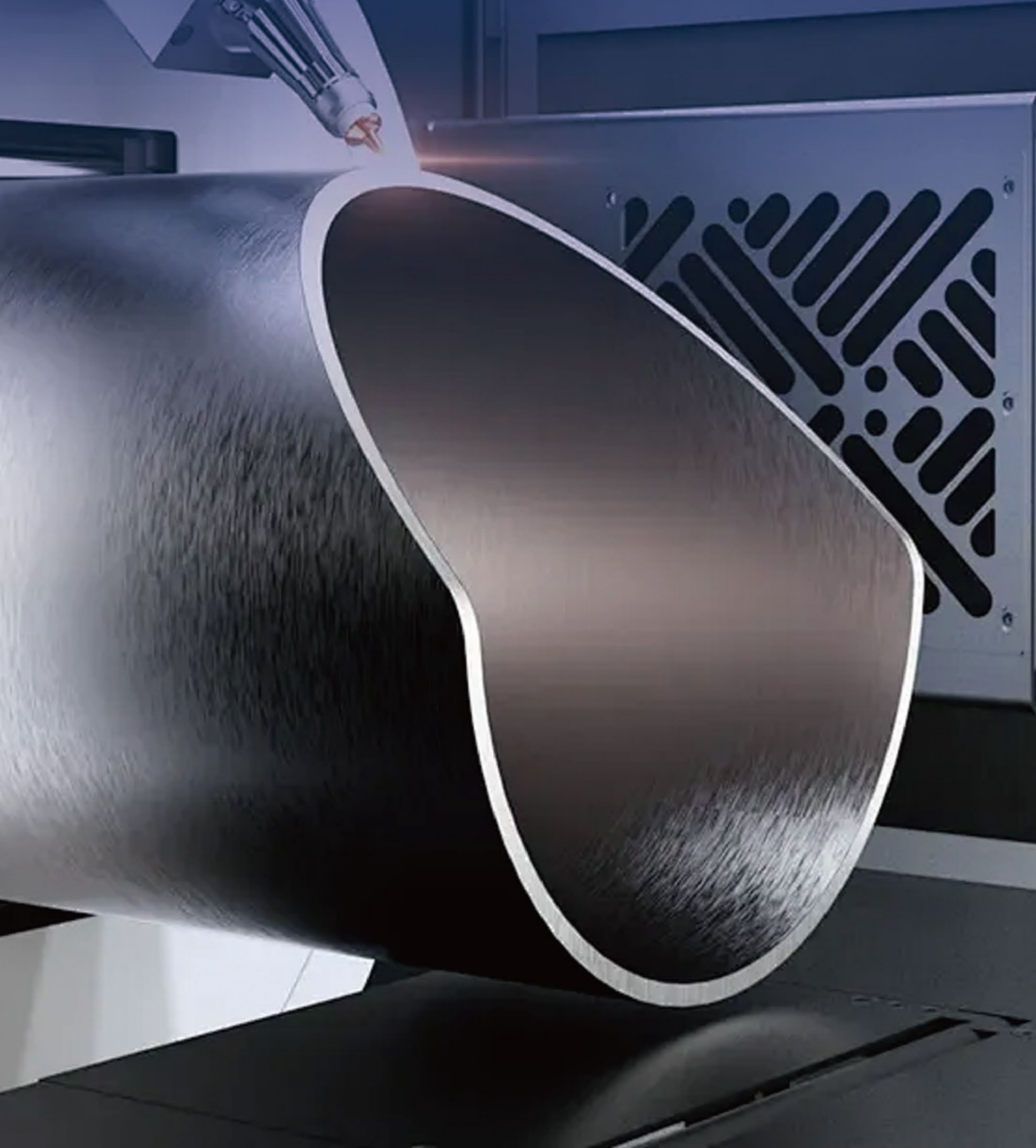


RM-LC FT

Model 机型	RM-LC FT3015	RM-LC FT4015	RM-LC FT6025
Power 功率	3000W-6000W	3000W-6000W	3000W-6000W
Processing format 加工幅面	3000mmx1500mm	4000mmx1500mm	6000mmx2500mm
chuck 卡盘		160/240	
Profile size 加工管径大小		□/○10mm-□/○160mm/240mm	
Positioning accuracy 定位精度		±0.05mm/m	
Repetitive positioning accuracy 重复定位精度		±0.03mm	
Maximum movement speed of X/Y axis X/Y轴的最大移动速度		30m/min	
Max. acceleration 最大加速度		0.5G	

FIBER LASER TUBE CUTTING MACHINE

激光管材切割机



Follow Up Feeding Device

随动下料装置

Floating feeding device, during the cutting of pipes, the floating support platform will follow the pipe up and down during the rotation process, better supporting the steel and ensuring cutting accuracy and quality.
浮动下料装置，在切割管材时，旋转过程中浮动支撑台会跟随管材上下浮动，更好的托住钢材，保证切割精度和质量。



L-shaped Side Hanging Bed

L型侧挂床身

The center of gravity of the whole machine is lower than that of the regular installation, with smooth operation and high accuracy; Precision components such as guide rails and racks are easy to maintain, with higher dust prevention and safety compared to traditional ones.
整机重心较正装式低，运转平稳，精度高；导轨、齿条等精密件易维护，防尘及安全性较正装式高。



Fully Self-developed Mes System

全自研MES系统

The equipment is equipped with a fully self-developed MES system, lean production, job scheduling, production process monitoring, quality management and other functions, effectively improving order response speed and production efficiency.
设备搭载全自研MES系统，精益生产，作业计划安排、生产过程监控、质量管理等功能，有效提升订单响应速度和生产效率和生产效率的同时还能减少人工，降低运营成本。



Fully Automatic Loading And Unloading Device

全自动上下料

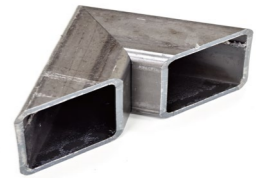
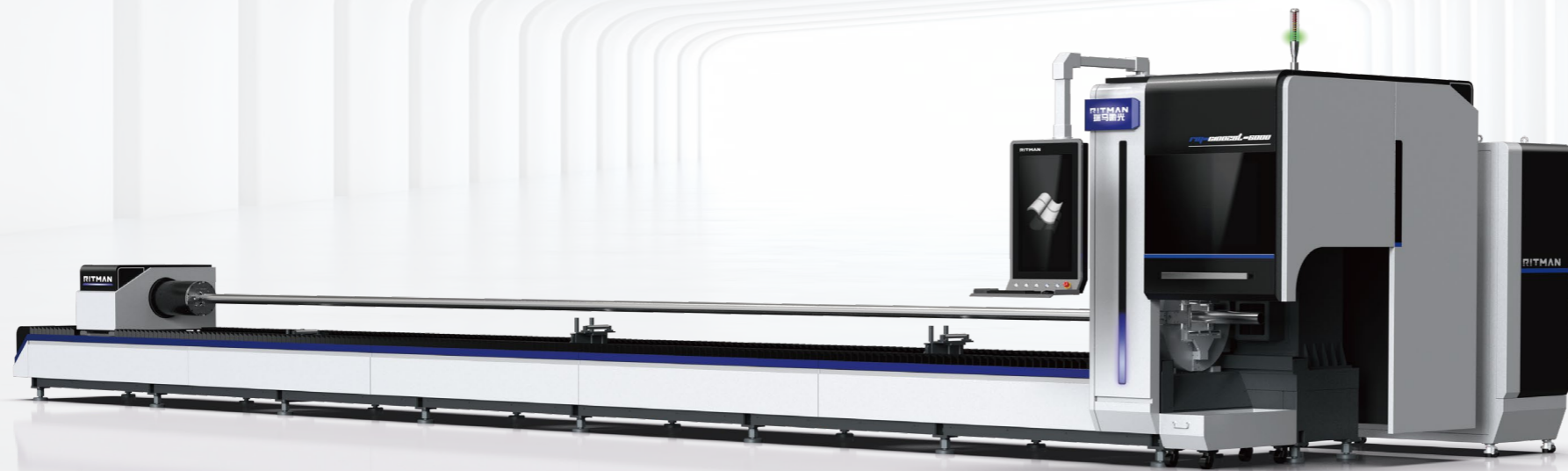
Optional semi-automatic/fully automatic loading and unloading devices can improve work safety, reduce the risk of injury, and reduce the workload of workers.
可选配半自动/全自动上下料装置，提高工作安全性，降低受伤危险，减轻工作人员工作，提高工作效率。

2 Chuck Laser Pipe Cutting Machine

2卡盘激光切管机

RM-LC TD Series

3000W-6000W



RM-LC TD

Model 机型	RM-LC TD7013	RM-LC TD7013C	RM-LC TD7513
Power 功率	3000W-6000W	3000W-6000W	3000W-6000W
Pipe size range 加工管径	∅/○: 10-120mm	∅/○: 10-120mm	∅/○: 10-120mm
The maximum length of machinable pipes 可加工管的最大长度	7000mm	7000mm	7500mm
Shortest remaining material 最短尾料	100mm	0	100mm
Maximum weight of pipes 管材的最大重量	150kg	100kg	150kg
Positioning accuracy 定位精度	±0.05mm/m	±0.05mm/m	±0.05mm/m
Repetitive positioning accuracy 重复定位精度	±0.03mm	±0.03mm	±0.03mm

3 Chuck Laser Pipe Cutting Machine

3卡盘激光切管机

RM-LC TT Series

3000W-20000W



RM-LC TT				
Model 机型	RM-LC TT12024	RM-LC TT12036	RM-LC TT12052	
Power 功率	6000W-20000W	6000W-20000W	6000W-20000W	
Pipe size range 加工管径	□/○: 10-230mm	□/○: 10-360mm	□/○: 40-500mm	
The maximum length of machinable pipes 可加工管的最大长度	12000mm	12000mm	12000mm	
Shortest remaining material 最短尾料	0	0	0	
Maximum weight of pipes 管材的最大重量	300kg	1200kg	1800kg	
Positioning accuracy 定位精度	±0.05mm/m	±0.05mm/m	±0.05mm/m	
Repetitive positioning accuracy 重复定位精度	±0.03mm	±0.03mm	±0.03mm	

4 Chuck Laser Pipe Cutting Machine

4卡盘激光切管机

RM-LC TQ Series

3000W-20000W



RM-LC TQ

Model 机型	RM-LC TQ13024	RM-LC TQ12036	RM-LC TQ12052
Power 功率	6000W-20000W	6000W-20000W	3000W-20000W
Pipe size range 加工管径	□/∅: 10-230mm	□/∅: 10-360mm	∅/∅: 40-500mm
The maximum length of machinable pipes 可加工管的最大长度	13000mm	12000mm	12000mm
Shortest remaining material 最短尾料	0	0	0
Maximum weight of pipes 管材的最大重量	300kg	1200kg	1800kg
Positioning accuracy 定位精度	±0.05mm/m	±0.05mm/m	±0.05mm/m
Repetitive positioning accuracy 重复定位精度	±0.03mm	±0.03mm	±0.03mm

Fully Automatic Feeding System

全自动上料系统

RM LC R-Trans Series



Semi-Automatic Feeding System

半自动上料系统

RM LC R-loader Series



RM LC R-Trans

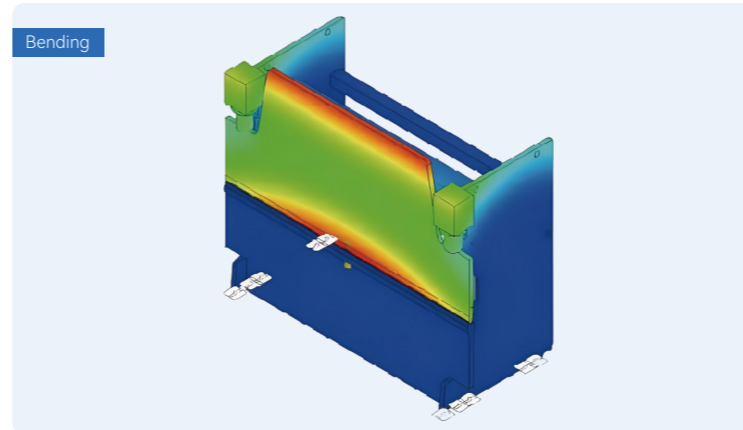
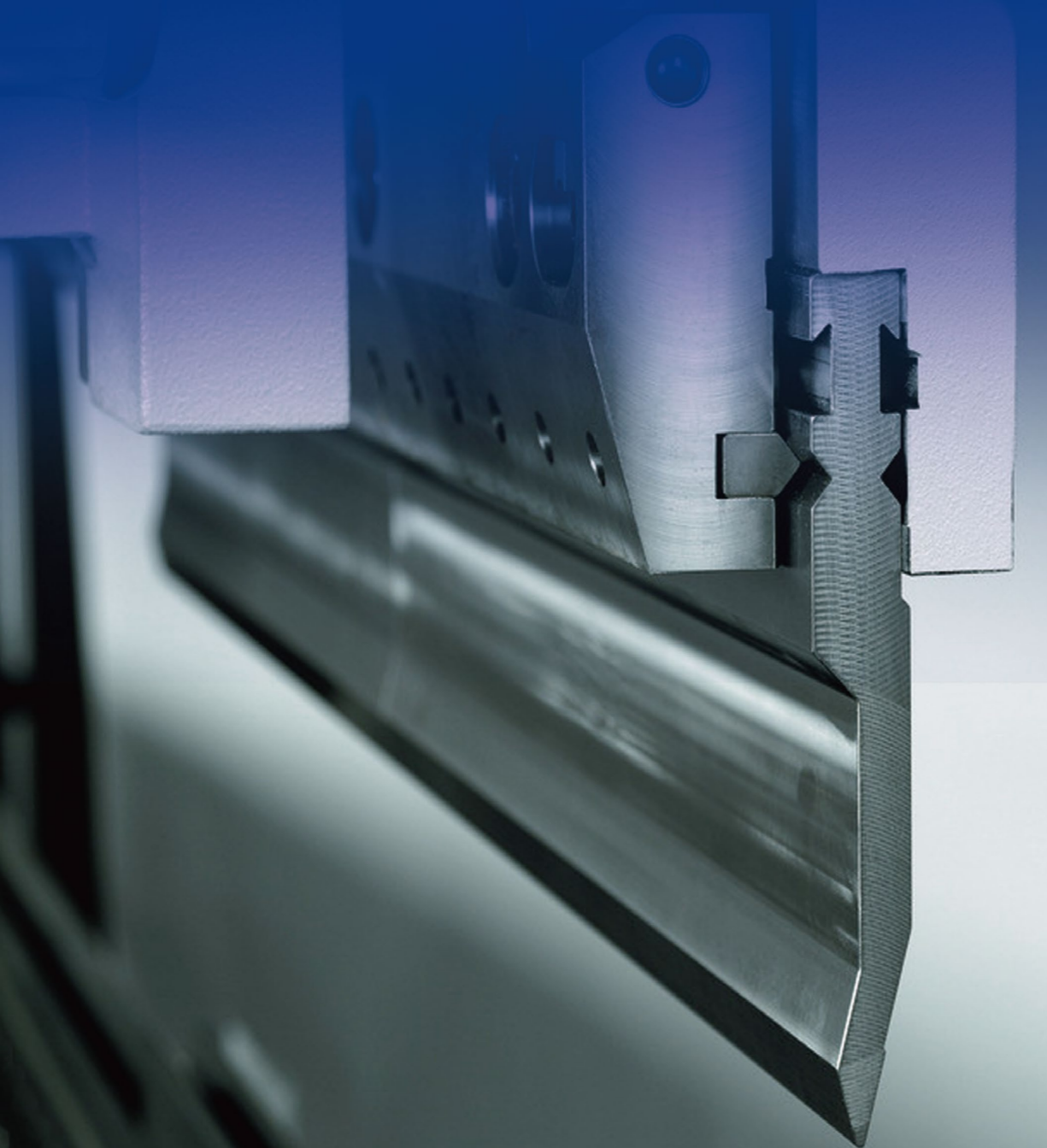
RM LC R-Trans		
Model 机型	R-Trans7024	R-Trans9024
Feeding Pipe Range 进料管范围	∅/○: 20-240mm	∅/○: 50-240mm
Raw Material Length 原材料长度	3000-7000mm	3000-7000mm
Feeding Method 进料方式	whole package feeding (整包进料)	whole package feeding (整包进料)
Number Of Workstations 工作站数量	1	1
Weight 重量	<3000kg	<5000kg

RM LC R-loader

RM LC R-loader						
Model 机型	R-loader7024	R-loader7036	R-loader9036	R-loader12036	R-loader12052	R-loader12066
Feeding Pipe Range 进料管范围	∅/○: <240mm	∅/○: <360mm	∅/○: <360mm	∅/○: <360mm	∅/○: <508mm	∅/○: <650mm
Raw Material Length 原材料长度	3000-7000mm	3000-7000mm	4000-9000mm	6000-12000mm	6000-12000mm	6000-12000mm
Feeding Method 进料方式	Single Feeding 单次进料	Single Feeding 单次进料	Single Feeding 单次进料	Single Feeding 单次进料	Single Feeding 单次进料	Single Feeding 单次进料
Number Of Workstations 工作站数量	6	6	6	6	3	3
Weight 重量	<300kg	<600kg	<600kg	<600kg	<1600kg	<3000kg

Bending Welding Marking Cleaning

折弯 焊接 打标 清洗



Rigid Frame

刚性框架

Adopt all steel welding frame and assembly workbench structure, with high precision and good rigidity; UGVANSYSCAD 3D finite element analysis and optimization design are adopted for the main components to ensure the overall stability of the rack.

采用全钢焊接机架和装配工作台结构，精度高，刚性好，主要部件采用UGVANSYSCAD三维有限元分析和优化设计，保证机架的整体稳定性。

High Quality Press Brake Tooling

高品质的冲压工具

Processed by forging and quenched as a whole, durable. High precision, high straightness, high repeatability, finally get the ideal bending effect. 整体锻打，整体淬火，经久耐用。高精度，高直线度，高重复性，最终得到理想的弯曲效果。

Good Performance And Fast Speed

良好的性能和快速的速度

Stable performance, perfect welding quality, 5-10 times faster than traditional welding speed, can be formed in one go.

性能稳定，焊接质量完美，比传统焊接速度快5-10倍，一次成型。

Easy To Operate

易于操作

Touch screen, intelligent operating system, built-in process package, beginner training can be mastered in half an hour.

触摸屏，智能操作系统，内置工艺包，初学者培训可在半小时内掌握。

Electro-Hydraulic FullEervo CNC Bending Machine

电动液压全伺服数控折弯机

RM JL ZW Series

Electro-Hydraulic FullEervo
CNC Bending Machine



RM JL ZW									
Model 模型	50T	80T	110T	135T	175T	210T	250T	320T	
Bending force(KN) 弯曲力(KN)	500	800	1100	1350	1750	2100	2500	3200	
Number of CNC axes CNC轴的数量	6+1	6+1	6+1	6+1	6+1	6+1	6+1	6+1	
Throat depth(mm) 喉嘴深度(mm)	205	350	410	410	410	410	410	410	
Foldable length(mm) 可折长度 (mm)	1600	2500	2500-4000	2500-6000	2500-6000	3200-6000	3200-6000	3200-6000	
Main motor power (kw) 主电机功率 (kw)	5.5	7.5	7.5	11	11	15	18.5	22	
Cylinder stroke 油缸行程	160	160	200	200	200	200	250	300	
Mold height 装模高度	540	570	570	570	570	570	570	600	

Physical Scribing Machine

物理划刻机

RM-MS Series

Physical Scribing Machine



RM-MS		
Processing width (L×W) 加工宽度 (长×宽)		13000mm×2600mm
X,Y axis positioning accuracy X、Y 轴定位精度		±0.05mm/m
Repeatable positioning accuracy of X,Y axis X、Y 轴的可重复定位精度		±0.03mm
Maximum Synchronous No-Load Speed 最大联动空移速度		100m/min
Maximum Acceleration 最大加速度		0.5G
Countertop load-bearing 台面承重		8000kg
Overall dimensions 整体尺寸		17000*4500*2000
Weights 重量		~10510kg

Handheld Laser Welder

手持激光焊接机

RM-LW Series

Water-cooled integrated laser welding machine

1000W-3000W



Handheld Laser Cleaner

手持激光清洗机

RM-LD Series

Continuous Laser Cleaners

1000W-3000W

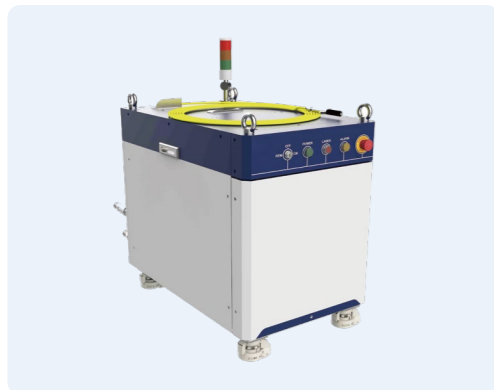


RM-LW				
Laser power 激光功率	1000W	1500W	2000W	3000W
Fiber length 光纤长度	7/10 metres as standard 15 metres can be customised 标配7/10米, 可定制15米			
Working mode 工作模式	Continuous/modulated pulse 连续/调制脉冲			
Welding speed 焊接速度	0-120mm/s			
Chiller 冷却器	Dual temperature and dual control constant temperature water tank 双温双控恒温水箱			
Applicable plate thickness 适用板厚	0.6-8mm			
Gap requirement 间隙要求	0-2mm			
Working voltage 工作电压	220V/380V 50Hz			

RM-LD				
Laser power 激光功率	1000W	1500W	2000W	3000W
Fiber length 光纤长度	7/10 metres as standard 15/20 metres can be customised 标配7/10米, 可定制15/20米			
Working mode 工作模式	Continuous/modulated pulse 连续/调制脉冲			
Power Adjustment Range 功率调节范围	10-100%			
Scanning Width 扫描宽度	10-300mm			
Working distance 工作距离	400/800mm			
Cooling method 冷却方式	Water Cooling 水冷			
Working voltage 工作电压	220V/380V 50Hz			

CORE ASSEMBLE PARTS

核心设备



Laser Source

激光器

Built-in high power module, unique back reflection protection technology with internal modular layout, high energy density, smaller shape, energy saving and power saving while achieving ultra-high power output, the laser power is continuously adjustable, with high electro-optical conversion efficiency and high beam quality.

内置高功率模块，独特的背反光保护技术及内部模块化布局，具有高能量密度，在实现超高功率输出的同时，形态更小、节能省电，激光功率连续可调，电光转换效率高、拥有较高的光束质量。



Filter Cartridge Dust Collector

滤筒除尘器

Adopt high efficiency centrifugal fan technology integrated spark catcher to ensure the safe and reliable operation of the machine. Automatic pulse cleaning technology to avoid the filter cartridge blocking the box, by professional structural design, structural safety and stability, strong confinement, beautiful and generous appearance.

采用高效离心风机技术一体化的火花捕捉器，保障机器安全可靠运行，自动脉冲清灰技术，避免滤筒堵塞箱体，经专业结构设计，结构安全稳定，密闭性强，外观美观大方。



Intelligent Operating System

智能操控系统

EtherCAT bus communication, more stable operation, stronger anti-interference, third generation algorithm, smoother operation, more powerful graphic processing capability. Support secondary development, five levels of perforation and EtherCAT bus communication.

EtherCAT总线通讯，操作更加稳定，抗干扰更强，第三代算法，运行更加流畅，图形处理能力更强大。支持二次开发，五级穿孔，支持EtherCAT总线。

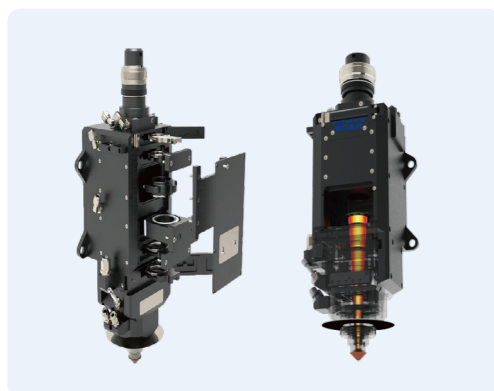


Air Compressor

空压机

Built-in after-cooler, low exhaust temperature, with drainage filter to ensure the cooling effect of the cooler, high quality air supply, wider application, stable air supply pressure, more suitable for laser cutting equipment.

自带后冷却器，排气温度低；自带排水过滤器保证冷干机冷却效果；自带冷干机，高品质供气，应用范围更广；供气压力平稳，更适合激光切割设备使用。



Laser Cutting Head

激光切割头

This cutting head has strong advantages in medium & high power large format fiber laser cutting applications. The inside of the laser head is completely sealed to avoid dust pollution on the optical part. The laser head adopts two-point centering adjustment, focusing is driven by imported motor, significantly improved efficiency in perforation.

切割头在中、高功率大幅面光纤激光切割应用中具有很强的优势。激光头内部完全密封，避免灰尘污染光学部分。激光头采用两点定心调节，调焦采用进口电机驱动，显著提高打孔效率。



Water Cooling Machine

水冷机组

Adopt liquid crystal controller, real-time display of cooling water temperature, CPU automatic control, man-machine dialogue, simple and intuitive operation, water temperature control accuracy $\pm 1^\circ\text{C}$, with automatic fault diagnosis function, directly display the fault point on the screen, prompting the user fast processing.

采用液晶控制器，实时显示冷却水温度，CPU全自动控制，可实现人机对话，操作简单直观，水温控制精度 $\pm 1^\circ\text{C}$ ，具有故障自动诊断功能，直接将故障点显示在屏幕上，提示用户快速处理。

APPLICATION FIELDS

应用领域



SERVICE

服务



Pre-sales Service 售前服务

Provide free production process solutions, including laser technology and technical consultation, sample testing, equipment selection, it can be customized and adjusted according to the special needs of customers.

免费提供生产工艺解决方案，包括激光技术及技术咨询、样品测试、设备选型，并可根据客户特殊需求进行定制并做出相应调整。



Installation & Commissioning 安装调试

Engineers to the site and installation and commissioning, the technical service engineer will finish it in an orderly manner as soon as possible for using.

工程师到现场安装调试，技术服务工程师尽快有条不紊地完成，供使用。



Technical Training 技术培训

Free technical training, includes laser principle, equipment construction, process description, equipment maintenance, laser safety protection, operating procedures and simple trouble shooting.

免费技术培训，包括激光原理、设备构造、工艺说明、设备维护、激光安全防护、操作规程和简单故障排除。



After-Sales Service 售后服务

Provide after-sales service work, such as equipment operation breakdown, company promises to provide optimal solutions to every customer.

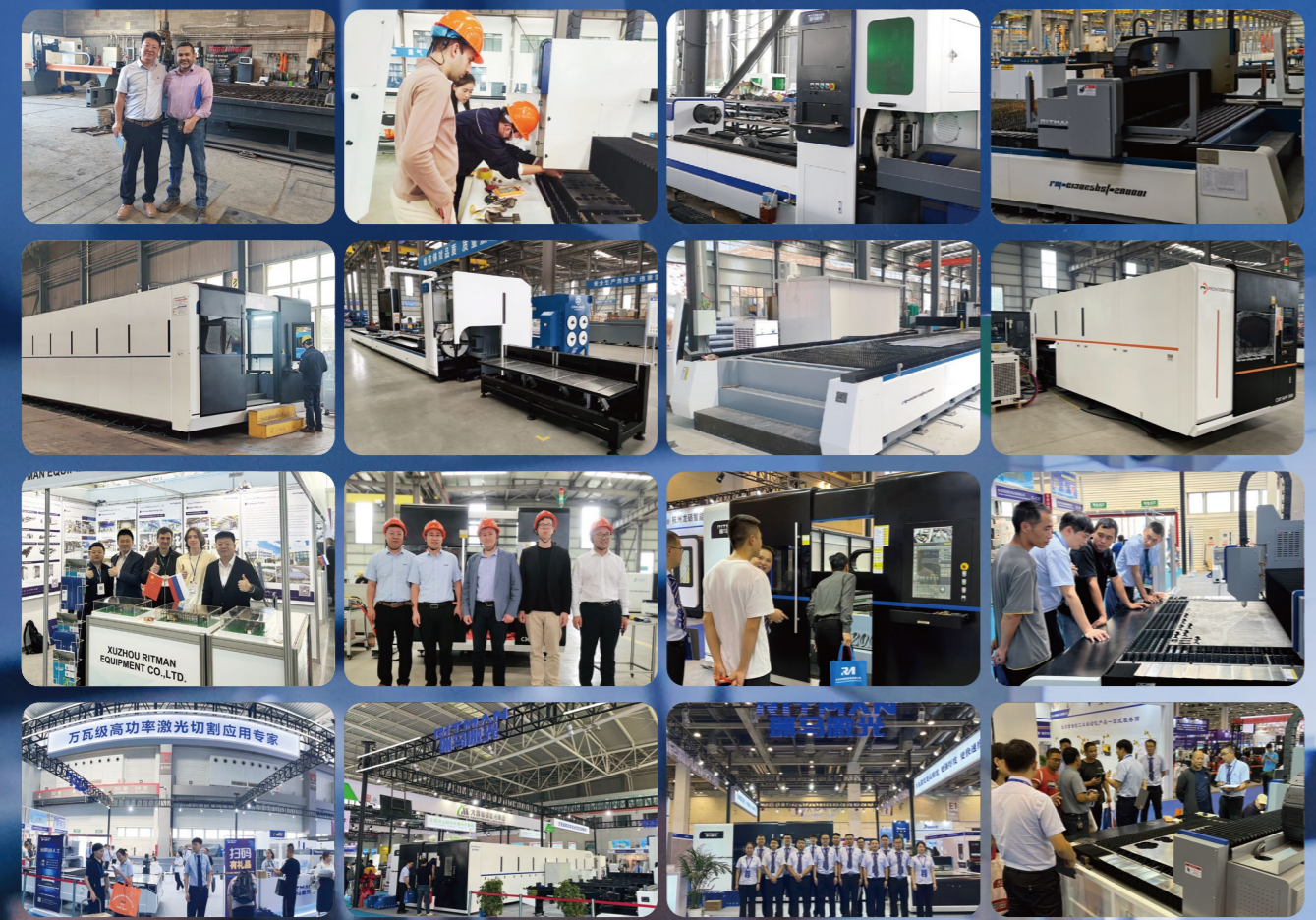
提供设备运行故障等售后服务工作，公司承诺为每一位客户提供最佳解决方案。

PROJECT CASE & EXHIBITION

项目案例和展会

Each equipment of RITMAN Laser has undergone strict **1000+** manufacturing and assembly processes and **48+** hours of non-stop quality inspection. Standardize production processes and standardize quality inspection requirements, create quality products, and strive for excellence for the benefit of customers, just to let customers have no worries. The company has successively served important customers such as XCMG Group, SANY Group, Zoomlion, CEEG, Guohua Tube Tower, State Grid, etc., providing laser cutting equipment and technical support services.

瑞马激光每台设备都经过严格的1000+道生产制造和装配工序，48+小时不停机质量检验。规范化生产流程，标准化质检要求，打造品质产品，为了客户利益而精益求精，只让客户无后顾之忧。公司先后服务徐工集团、三一集团，中联重科、中电装备、国华管塔、国家电网等重要客户，提供激光切割设备以及技术支持等服务。



COOPERATIVE PARTNER

合作伙伴

